



# ***PSF 430w***

***doppio circuito di raffreddamento  
collo di cigno corto***

July 16, 2021

**Lorenzo Baldassarre**  
Application Specialist Standard Equipment  
ESAB Med Region

# **NUOVA torcia MIG/MAG *PSF 430w***

***Doppio circuito di raffreddamento (circuito chiuso)  
collo di cigno corto***



# NUOVA torcia MIG/MAG **PSF 430w**

*Codici per l'ordine*

Codice	Descrizione
0700 025 076	Torcia MIG/MAG modello <b>PSF 430w</b> – <b>lunghezza 3 m</b> connettore Euro – doppio circuito di raffreddamento
0700 025 077	Torcia MIG/MAG modello <b>PSF 430w</b> – <b>lunghezza 4 m</b> connettore Euro – doppio circuito di raffreddamento
0700 025 078	Torcia MIG/MAG modello <b>PSF 430w</b> – <b>lunghezza 5 m</b> connettore Euro – doppio circuito di raffreddamento



# NUOVA torcia MIG/MAG **PSF 430w**

*Info tecniche*



# NUOVA torcia MIG/MAG **PSF 430w**

*Doppio circuito di raffreddamento (circuito chiuso)  
collo di cigno corto*





# NUOVA torcia MIG/MAG *PSF 430w*

*Ugello gas filettato*



# NUOVA torcia MIG/MAG **PSF 430w**

## Spare parts

### SPARE PARTS LIST

#### Torch neck PSF 420w, 420w straight, PSF 430w, PSF 520w

Item	Ordering no.	Denomination	PSF 420w	PSF 430	PSF 520w
300	0700 025 004	Torch neck PSF 420w	X		
300a	0700 025 010	Torch neck PSF 420w straight	X		
300b	0700 025 011	Torch neck PSF 430w		X	
301	0700 025 005	Torch neck PSF 520w			X
302	0700 025 905	Handle cpl. Expert Plus	X		
303	0700 025 906	Handle cpl. Expert Plus		X	X
304	0700 025 903	Trigger, yellow, 2-poles	X	X	X
305	0700 025 904	Screw for handle	X	X	X
306	0700 025 971	Cable support cpl.	X	X	X
307	0700 025 973	Quick connector	X	X	X
308	0700 025 975	Hose clamp with ring Ø 9.0	X	X	X
309	0700 025 951	Adaptor nut	X	X	X
310	0700 025 970	Central connector W	X	X	X
311	0700 200 098	Liner locking nut	X	X	X
312	0700 025 952	Cylinder head screw M4 x 6	X	X	X
313	0700 025 953	O-ring 4.0 x 1.0 mm	X	X	X
314	0700 025 974	Hose clamp with ring Ø 8.7	X	X	X
315	0700 025 976	Hose clamp with ring Ø 9.5	X	X	X
316	0700 025 972	Clamping ring for outer cover	X	X	X
317	0700 025 993	PVC-Gas hose, black, 4.5 x 1.5 mm	X	X	X
318	0700 025 994	PVC hose, braided, black, 5 x 1.5 mm	X	X	X
319	0700 025 992	Fabric outer cover	X	X	X
324	0700 025 850	Modul ESAB RS3	X	X	X

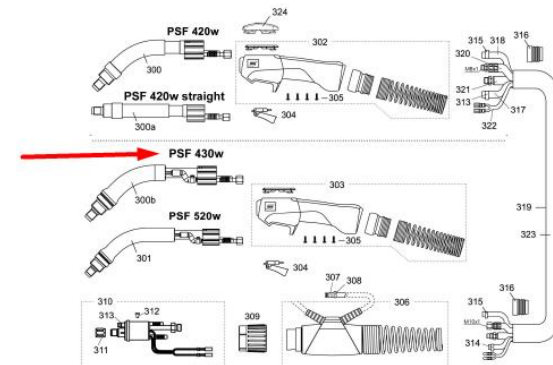
Item	Ordering no. / 3 m	Ordering no. / 4 m	Ordering no. / 5 m	Denomination
320	0700 025 983	0700 025 984	0700 025 985	Water-power cable
321	0700 025 986	0700 025 987	0700 025 988	Wire conduit
322	0700 025 989	0700 025 990	0700 025 991	Control cable cpl.
323	0700 025 980	0700 025 981	0700 025 982	Cable assembly

0463 645 001

- 25 -

© ESAB AB 2020

### SPARE PARTS LIST



0463 645 001

- 26 -

© ESAB AB 2020

# NUOVA torcia MIG/MAG **PSF 430w**

## Wear parts

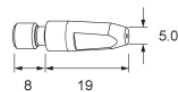
### WEAR PARTS

Contact tips PSF 260, PSF 315, PSF 415, PSF 515, PSF 420w, PSF 430w, PSF 520w

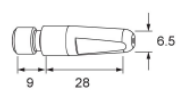
PSF 260* / PSF 315	PSF 415 / PSF 420w / PSF 430w	Gas / wire Ø		M6
		CO <sub>2</sub>	Mix/Ar	
0468 500 001	0468 500 001	0.6	-	W0.6 / 0.8
0468 500 002	0468 500 002	-	0.6	W0.8 / 0.9
0468 500 003	0468 500 003	0.8	-	W0.8 / 1.0
0468 500 004	0468 500 004	0.9	0.8	W0.9 / 1.1
0468 500 005	0468 500 005	1.0	0.9	W1.0 / 1.2
0468 500 006	0468 500 006	1.2	-	W1.2 / 1.4
0468 500 007	0468 500 007	1.2	1.0	W1.2 / 1.5
0468 500 008	0468 500 008	1.4	1.2	W1.4 / 1.7
-	0468 500 009	1.6	-	W1.6 / 1.9
-	0468 500 010	-	1.6	W1.6 / 2.1

\*PSF 260 only for M6 and wire 0.6 – 1.0

M6 x 27



M8 x 37



PSF 315	PSF 415 / PSF 420w / PSF 430w	PSF 515 / PSF 520w	Gas / wire Ø		M8
			CO <sub>2</sub>	Mix/Ar	
0468 502 003	0468 502 003	0468 502 003	0.8	-	W0.8 / 1.0
0468 502 004	0468 502 004	0468 502 004	0.9	0.8	W1.0 / 1.1
0468 502 005	0468 502 005	0468 502 005	1.0	0.9	W1.0 / 1.2
0468 502 006	0468 502 006	0468 502 006	1.2	-	W1.2 / 1.4
0468 502 007	0468 502 007	0468 502 007	1.2	1.0	W1.2 / 1.5
0468 502 008	0468 502 008	0468 502 008	1.4	1.2	W1.4 / 1.7
-	0468 502 009	0468 502 009	1.6	-	W1.6 / 1.9
-	0468 502 010	0468 502 010	-	1.6	W1.6 / 2.1

0463 645 001

- 34 -

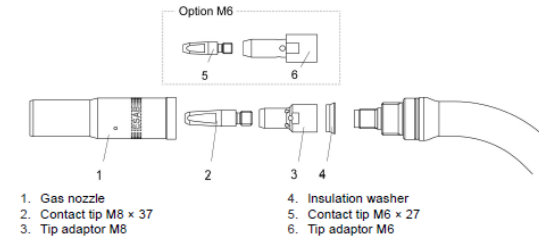
© ESAB AB 2020

### WEAR PARTS

PSF 430w

Bold = standard delivery. For contact tip, see contact tips table.

Ordering no.	Denomination	Notes	Ø	Length	
<b>0458 464 882</b>	Gas nozzle	Standard	16 mm	80 mm	
0458 465 882	Gas nozzle	Conical	14 mm	80 mm	
0458 470 882	Gas nozzle	Straight	19 mm	80 mm	
0366 394 001	Tip adaptor M6			40.6 mm	
<b>0460 819 001</b>	Tip adaptor M8 Cu			<b>31.6 mm</b>	
0700 025 851	Tip adaptor M8 brass			31.6 mm	
0458 874 001	Insulation washer				



1. Gas nozzle
2. Contact tip M8 x 37
3. Tip adaptor M8
4. Insulation washer
5. Contact tip M6 x 27
6. Tip adaptor M6

0463 645 001

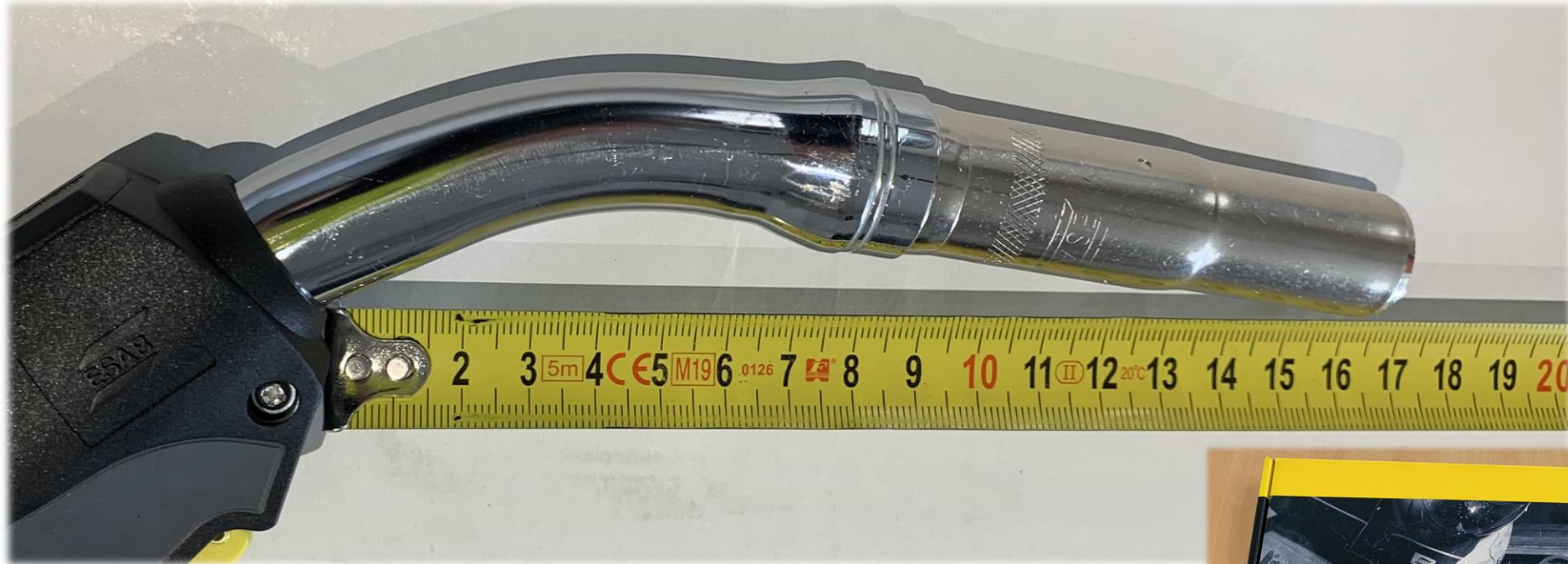
- 32 -

© ESAB AB 2020



# NUOVA torcia MIG/MAG **PSF 430w**

*Doppio circuito di raffreddamento (circuito chiuso)  
collo di cigno corto*





VICTOR® // THERMAL DYNAMICS® // TWECO® // ARCAIR® // EXATON™ // STOODY® // ALCOTEC® // AMI® // GCE®